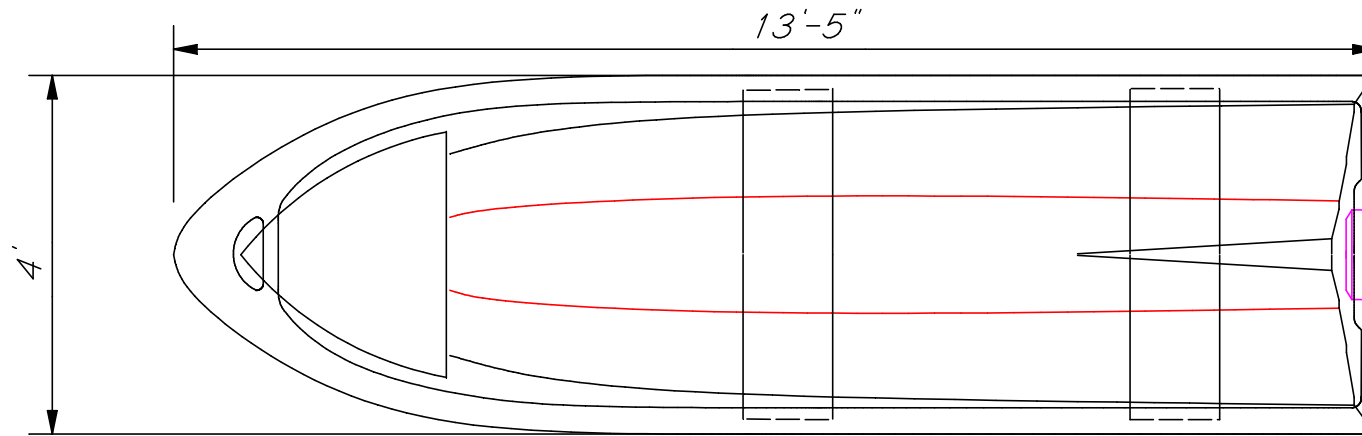
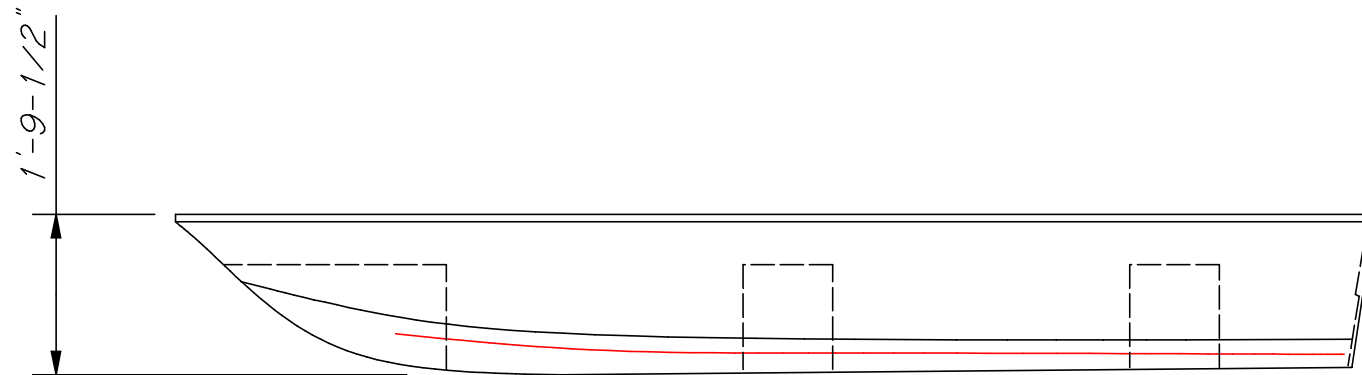


EXPLORER GRANDE TOPPER STD MODEL



PLAN VIEW



INBOARD PROFILE

EXPLORER COMPOSITE SDN. BHD.
1320-C, BT.4-1/2, KLEBANG BESAR, 75200 MELAKA, MALAYSIA
TITLE : GENERAL ARRANGMENT
TYPE OF BOAT : GRANDE TOPPER-GRT 13.5
DRAWING NO : L - 02 - 007
SCALE : 1:25
DATE : 05/02/2023

OVERALL LENGTH (LOA) : 13FT 5IN (4.09M)
LENGTH WATER LINE (LWL) : ~12FT (3.65M)
BREADTH MOLDED (B) : 4FT.(1.22M)
DEPTH MOLDED (D) : 1FT 9.5IN (0.59M)
DRAFT DESIGNED (T) : ~7IN (0.177M)
TRANSOM HEIGHT : 1FT 3IN (0.39M)

HULL MATERIAL : FIBERGLASS
APPLICATION REQUIREMENT : FISHING BOAT
DRY WEIGHT (W) : ~63KG
RATED POWER : ~1X15HP-OBM
LOADING CAPACITY : ~4PERSONS
FUEL TANK CAPACITY : -