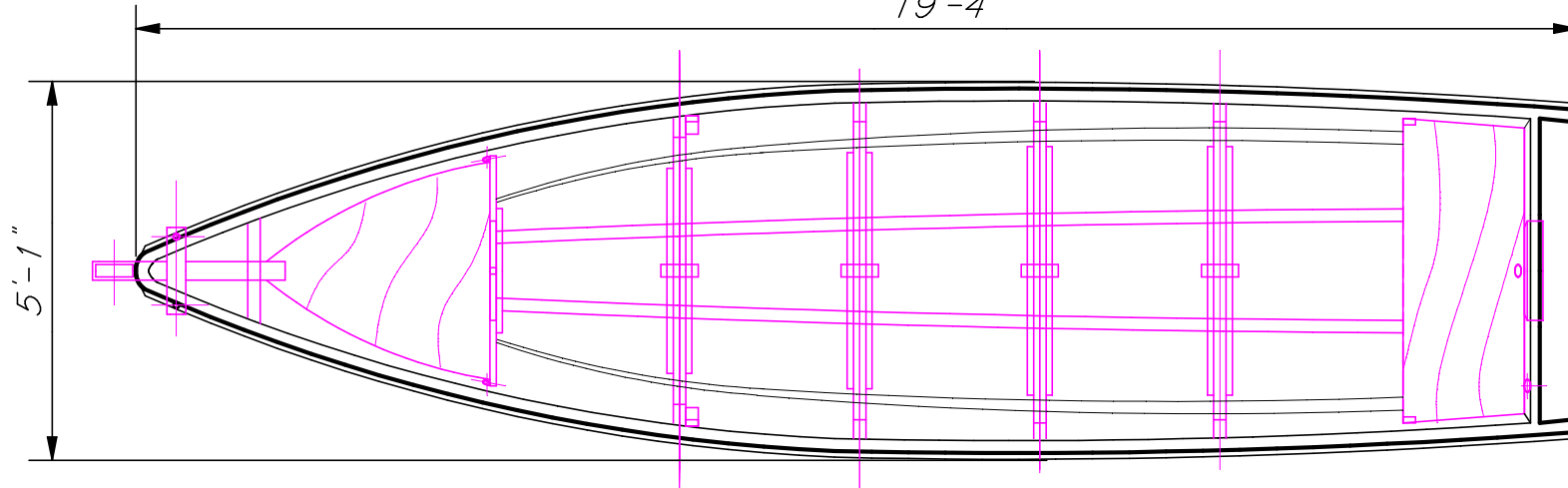
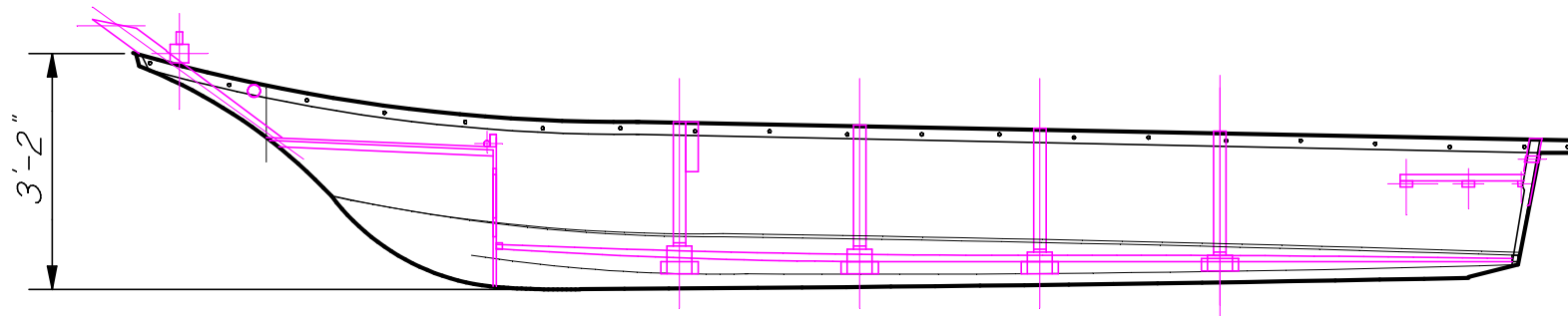


EXPLORER F19 FRP RIB

19'-4"



5'-1"



INBOARD PROFILE

EXPLORER COMPOSITE SDN. BHD.
1320-C, KLEBANG BESAR, 75000 MELAKA
TITLE : GENERAL ARRANGEMENT
TYPE OF BOAT : F19-FRP RIB
DRAWING NO : L - 03 - 012
UNIT TYPE : FEET/INCHES
SCALE : 1:30
DATE : 05/02/2023

OVERALL LENGTH(LOA) : 19FT 4IN (5.98)
LENGTH WATER LINE(LWL) : ~15FT 6IN (4.7)
BREADTH MOLDED(B) : 5FT 11IN (1.55)
DEPTH MOLDED(D) : 3FT 2IN (.97)
DRAFT DESIGNED(T) : ~8IN
TRANSOM HEIGHT : 1FT 8IN

HULL MATERIAL : FIBERGLASS
APPLICATION REQUIREMENT : FISHING BOAT
DRY-HULL WEIGHT(W) : ~170KG
RATED POWER : 1x30HP OBM
LOADING CAPACITY : ~6PERSONS
FUEL TANK CAPACITY : -