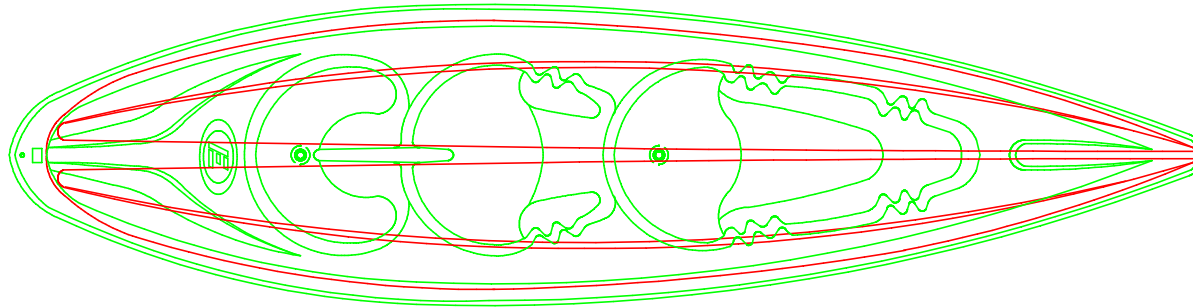
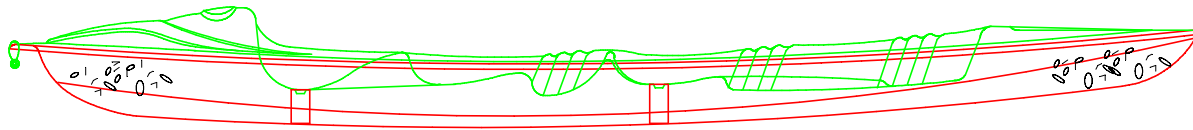


KAYAK SPLASH SIT ON DOUBLE SEATER



MAIN DECK PLAN



INBOARD PROFILE

EXPLORER COMPOSITE SDN. BHD
1320-C, KLEBANG BESAR, 75000 MELAKA, MALAYSIA
TITLE: GENERAL ARRANGEMENT
TYPE OF BOAT: ESO
DRAWING NO : L - 01 - 001
UNIT TYPE: FEET/INCHES
SCALE: 1:25
DATE: 05-02-2023

OVERALL LENGTH (LOA): 13FT 04IN
LENGTH WATER LINE (LWL): ~11FT 0IN
BREADTH MOLDED (B): 3FT 4IN
DEPTH MOLDED (D): 1FT 4IN
DRAFT DESIGNED (T): ~4IN

CONSTRUCTION MATERIAL: FIBREGLASS
APPLICATION REQUIREMENT: OPEN SEA RECREATION KAYAK
DRY WEIGHT(W): ~36KG
RECOMMENDED POWER: MANUAL PADDLING
SEATING CAPACITY: 2PERSONS
PADDLER SKILL : BEGINNER TO ADVANCED