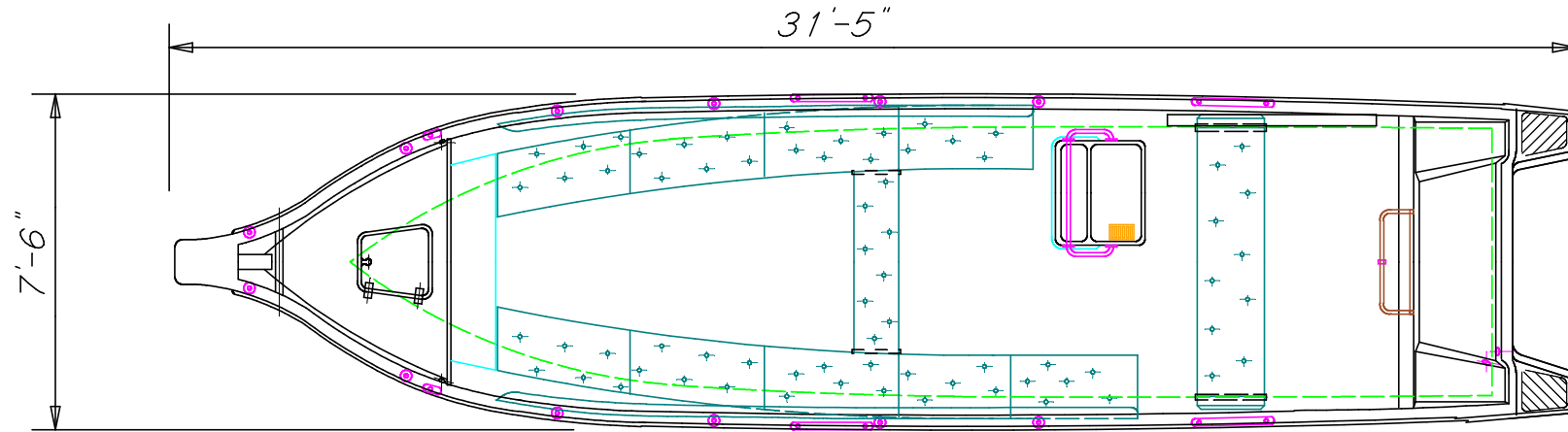
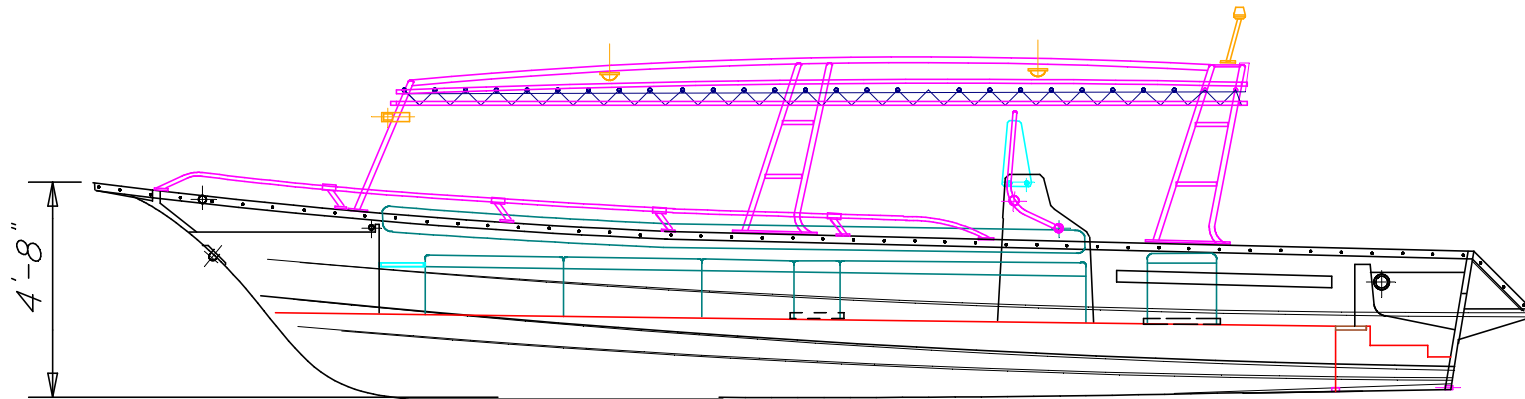


EXPLORER E320 OPEN DECK



MAIN DECK PLAN



INBOARD PROFILE

EXPLORER COMPOSITE SDN. BHD.
1320-C, KLEBANG BESAR, 75000 MELAKA, MALAYSIA
TITLE: GENERAL ARRANGEMENT
TYPE OF BOAT: E320-STD OD
DRAWING NO : E320_E705
SCALE: 1:50
DATE: 05-02-2023

OVERALL LENGTH (LOA): 31FT 5in. (9.58M)
LENGTH WATER LINE (LWL): ~25FT 6IN (7.87M)
BREADTH MOLDED (B): 7FT 6IN (2.29M)
DEPTH MOLDED (D): 4FT 8IN (1.42M)
DRAFT DESIGNED (T): ~1FT 4IN (0.41M)
TRANSOM HEIGHT: 2FT 1IN (0.64M)

HULL MATERIAL: FIBERGLASS
REQUIREMENT APPLICATION: PASSENGER/SPORT FISHING BOAT
DRY WEIGHT (W): ~820KG
RATED POWER: 2x150HP-1x300HP
SEATING CAPACITY: ~16PERSONS
FUEL TANK CAPACITY: ~50IMP GALLONS