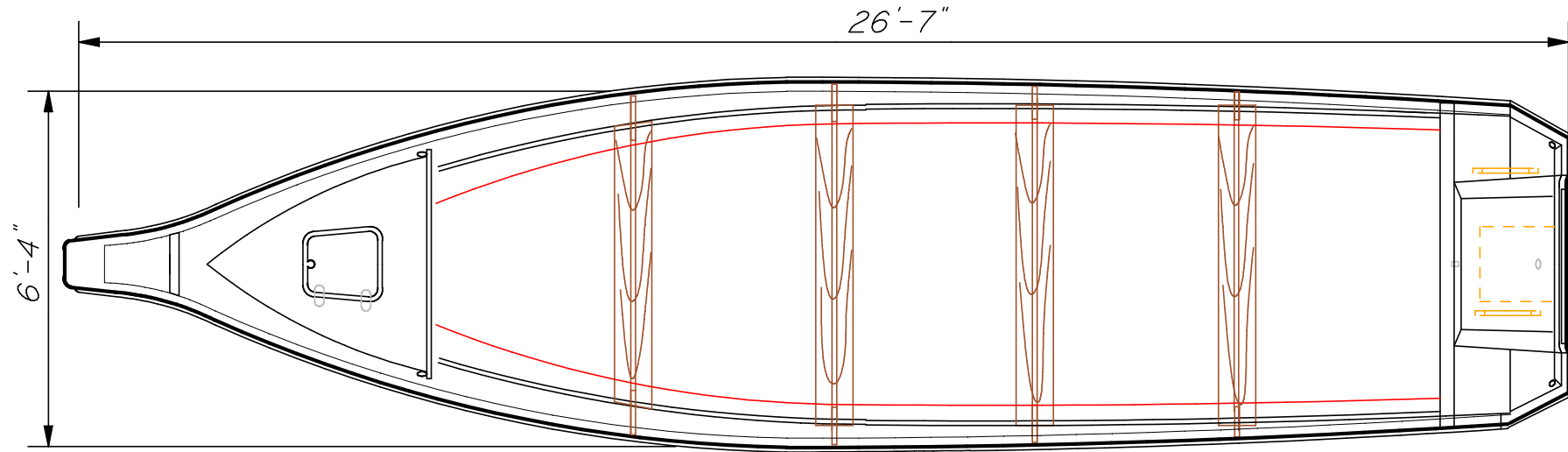
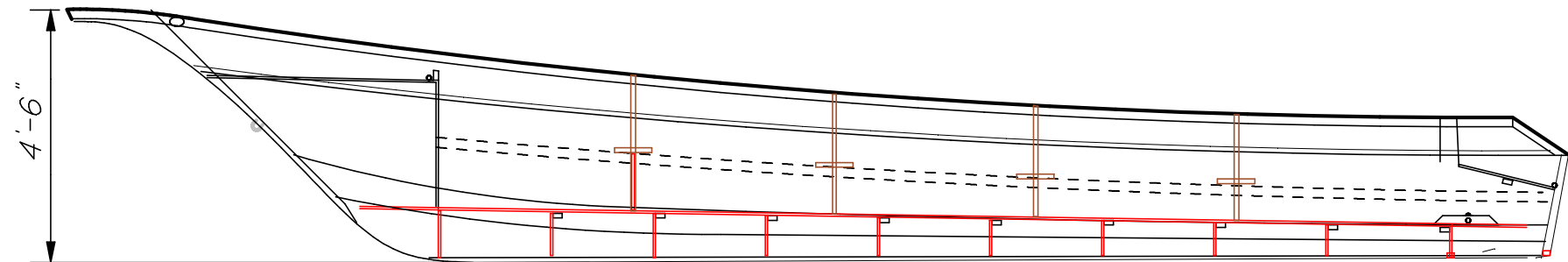


EXPLORER E270-STD OPEN DECK



MAIN DECK PLAN



INBOARD PROFILE

EXPLORER COMPOSITE SDN. BHD.  
1320-C, BT.4-1/2, KLEBANG BESAR, 75200 MELAKA, MALAYSIA  
TITLE : GENERAL ARRANGMENT  
TYPE OF BOAT : E270-STD  
DRAWING NO : L - 05 - 023  
SCALE : 1:35  
DATE : 05/02/2023

OVERALL LENGTH HULL (LOA) : 26FT 7IN  
LENGTH WATER LINE (LWL) : ~21FT 1.1/2IN  
BREADTH MOLDED (B) : 6FT 4IN  
DEPTH MOLDED (D) : 4FT 6IN  
DRAFT DESIGNED (T) : ~9IN  
TRANSOM HEIGHT : 1FT 9IN

HULL MATERIAL : FIBERGLASS  
APPLICATION REQUIREMENT : PASSANGERS SERIES  
DRY WEIGHT (W) : ~500KG  
RECOMMANDED POWER : 1 x 85HP OBM  
SEATING CAPACITY : 8 PERSONS  
FUEL TANK CAPACITY : ~.....IMP GAL